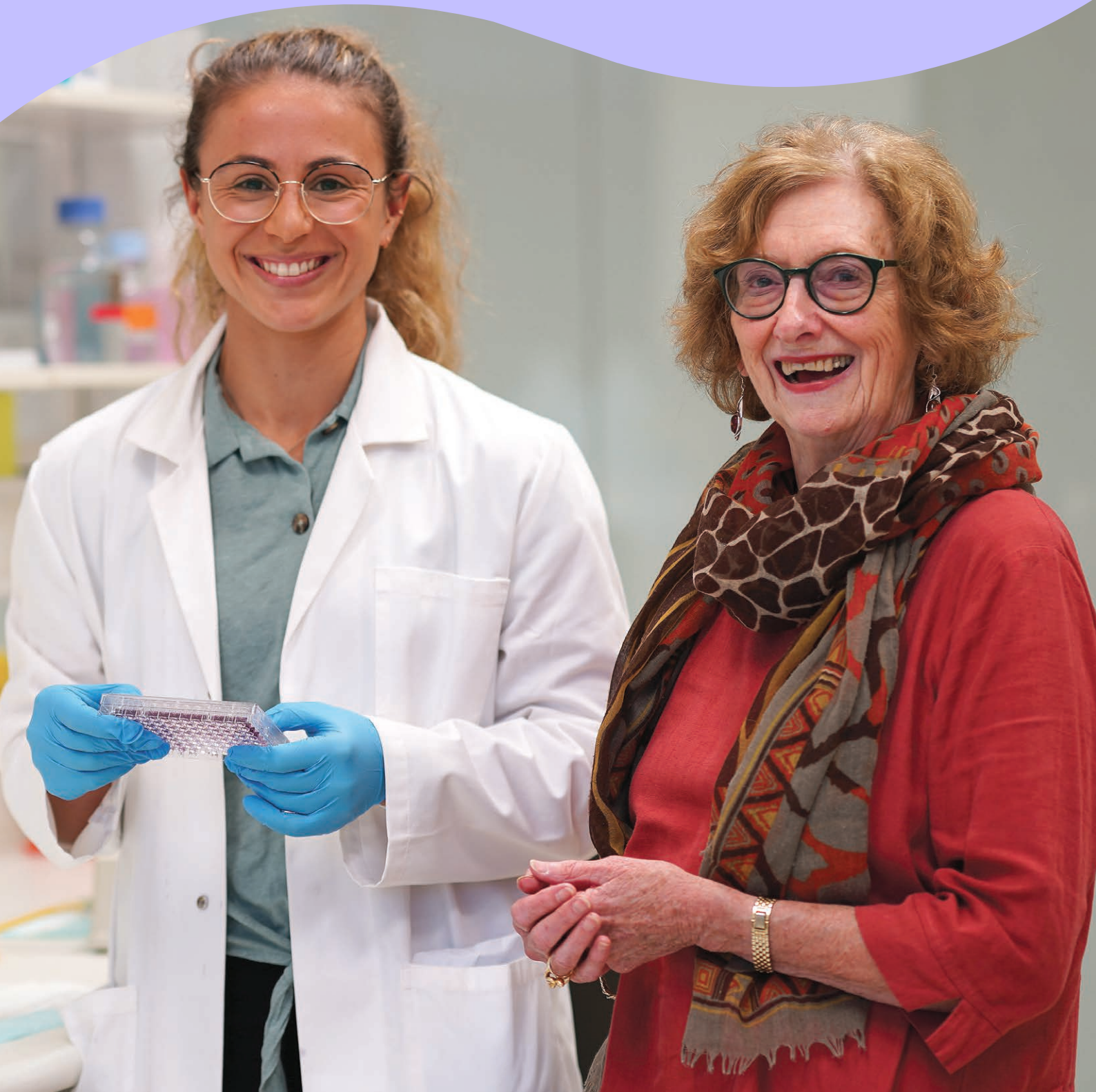




**The Florey**  
Advancing Brain Research

# You can reimagine the future with a gift in your Will

A future where people can live their lives unlimited by  
brain and mental health conditions.



# Through brain and mind science, we can improve lives

**The human brain – a spongy, 1.5kg mass of tissue – is the most complex living structure.**

Our brains have enabled us as humans to achieve breathtaking milestones – exploring the solar system, mapping the human genome and composing masterpieces of art, literature and music.

But there is still much to discover about the brain and its function and how to fix it if things are not as they should be. That is the challenge.

Every year, 5 million Australians live with one of the conditions studied at The Florey: stroke, dementia, schizophrenia, epilepsy, Parkinson's disease, depression, addiction and many more.

Improving knowledge of these conditions is an incalculable gift you can, if you wish, make to the next generation.

Will you join other caring, compassionate people who include gifts to The Florey in their Wills to take on this challenge?

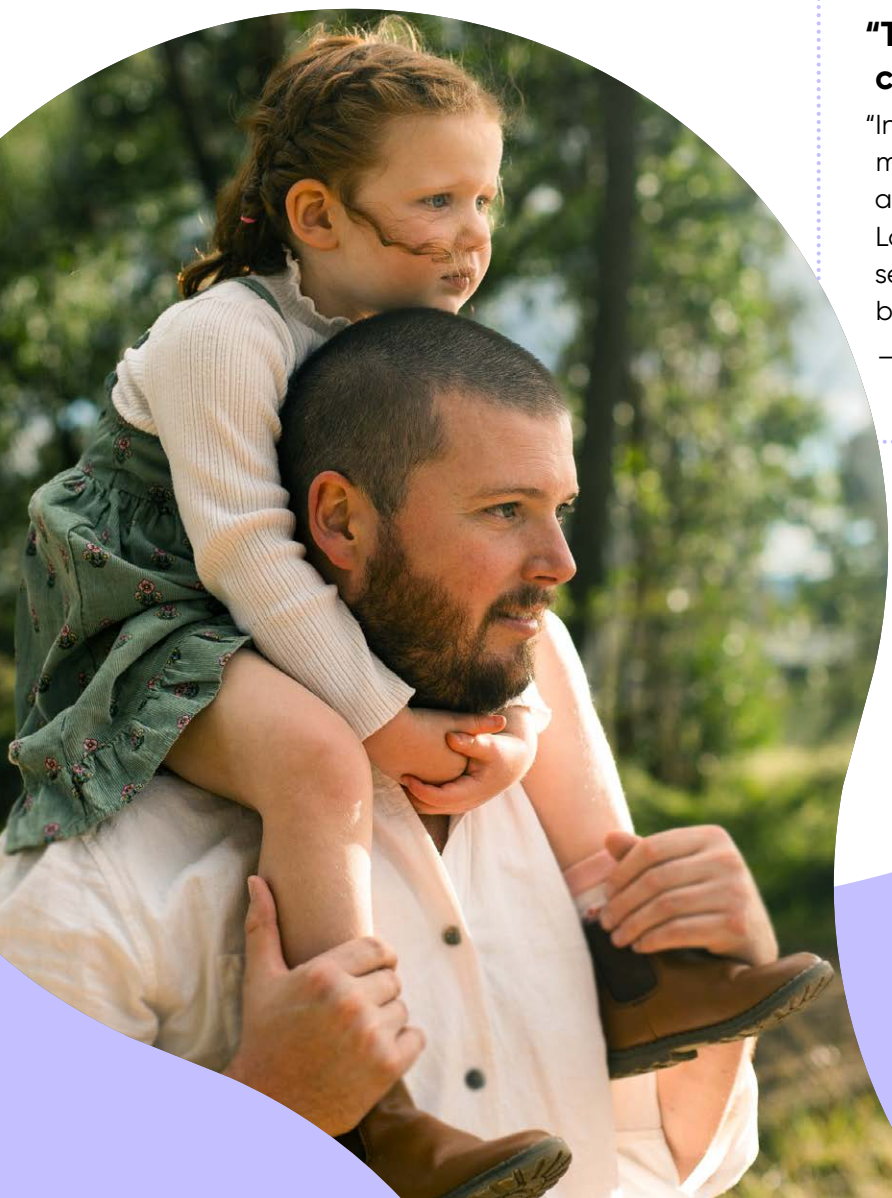
**By leaving a gift to The Florey in your Will, you have an opportunity to reimagine the future. A future where people can live their lives unlimited by diseases and conditions.**

## **Saving children from seizures**

**"The Florey in that moment changed our lives."**

"In 3-and-a-half long years we hadn't managed a single positive outcome for all our dedication and effort. Chris and Lauren's research allowed us to stop Fern's seizures almost instantly, and she has been seizure-free ever since."

– Philip Stevens, father of young Fern





# Where remarkable minds advance brain science

## The Florey, the home of brain and mind research

**The Florey Institute of Neuroscience and Mental Health was first established in 1960 and was known as the Howard Florey Institute of Experimental Physiology and Medicine. It was established by a group of far-sighted philanthropists to assist medical research.**

Since that time, The Florey has amalgamated with the Mental Health Research Institute, the National Stroke Research Institute and the Brain Research Institute to create a powerhouse of brain and mind research.

The Florey is the largest brain research institute in the Southern Hemisphere, investigating the causes of and treatments for 20+ neurological conditions.

Since its founding, The Florey has been at the forefront of major scientific breakthroughs that improve the health of our community.

Some of the significant research breakthroughs achieved at The Florey over the last 50 years include:

- Revolutionising stroke recovery through clot removal and new drugs
- Identifying the importance of the brain protein beta amyloid as a key marker and cause of Alzheimer's disease
- Discovering underlying genetic causes of epilepsy and developing life-changing drugs
- Pioneering epigenetic inheritance research which suggests environmental influence on health starts prior to conception
- Using engineered G-protein-coupled receptors (GPCRs) to discover new drug candidates for a broad range of brain diseases.

**From its beginning, The Florey has been dedicated to medical research that improves people's lives**

# You can help improve lives

Consider including a gift in your Will to The Florey

## Ralph and Maureen

**Both Ralph and Maureen Stavely have been touched by the anguish of brain illness.**

Maureen's cherished father tragically died of a stroke, at the age of 55. And Ralph watched his beloved grandfather 'Pop Stavely', slowly succumb to the ravages of motor neurone disease (MND).

The impact of these personal experiences on the couple encouraged them to look for a way to support research into conditions that affect the brain. That's when they came to The Florey.

Ralph and Maureen have been valued supporters of The Florey for more than 20 years.

But they decided they wanted to do more.

Ralph and Maureen have decided to include a gift in their Will so The Florey can continue its vital research into the brain and the mind.

Despite the extraordinary advances made at The Florey over the last few decades, Ralph and Maureen know there is still a lot to do.

Their hope is, with their support, The Florey's researchers will find better treatments and perhaps even a cure for diseases like MND. It would be a fitting way to honour Ralph's much loved "Pop".

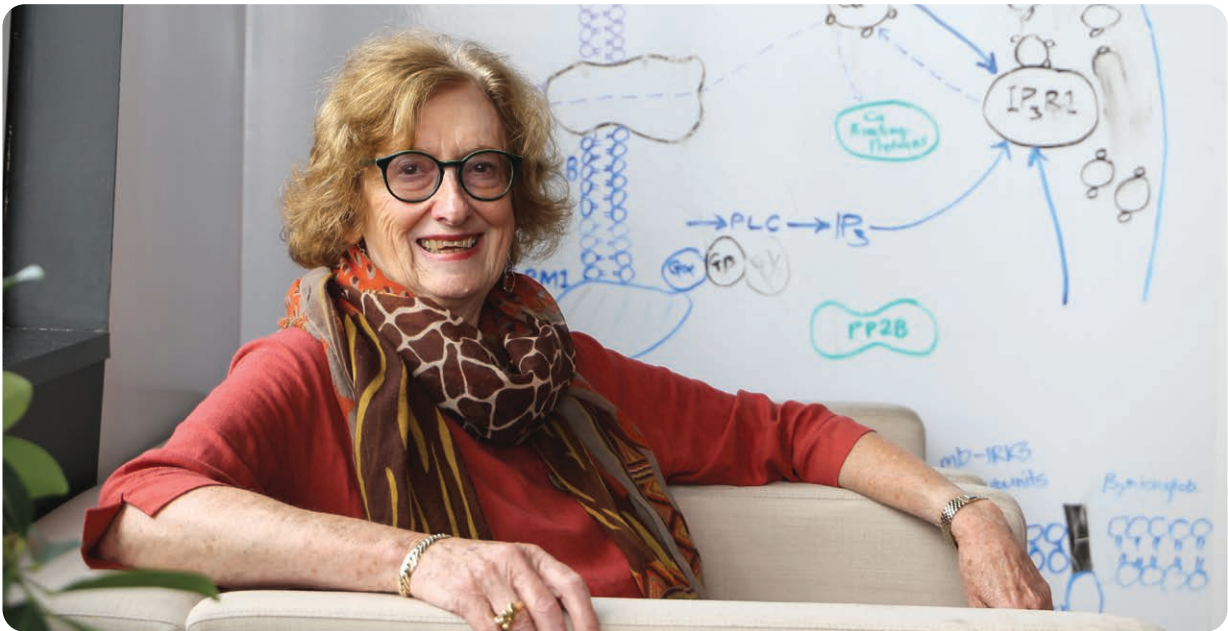
Ralph and Maureen want to ensure valuable brain research continues into the future.



**"We have witnessed the enormous strides made in tackling many brain illnesses and disorders, but much more needs to be done. Our belief in the importance of medical research powers our continued support."**

– Ralph

## Julie



**Julie Nankervis's personal and professional lives have made her keenly aware of the difficulties faced by people with a wide range of brain illnesses, their families and carers.**

Julie's dad had vascular dementia towards the end of his life and her mother-in-law had Alzheimer's disease. She has lived experience of caring for people in one of The Florey's key research areas, Alzheimer's disease and other dementias.

And working as a researcher and policy advisor in health and family welfare settings brought her face to face with the difficulties experienced by carers of people with dementia and mental health disease.

Julie has generously decided to include a gift in her Will to The Florey because she values the range and depth of research undertaken in trying to understand and find treatments for

diseases of the brain and mind. And to improve people's lives.

**"The Florey's work across so many conditions is truly amazing, requiring dedication and encouragement. I want Florey scientists to be better able to pursue the experiments and trials needed to make clinical breakthroughs, by having a little more funding to resource their work,"** said Julie.

**"I want to contribute in some small way to the continuity of Florey's outstanding work."**

– Julie

# By including a gift in your Will, your

## Give hope to people with dementia

The Florey is committed to finding better treatments for dementia and perhaps one day, a cure.

Professor Scott Ayton, the Dementia Mission Research Lead at The Florey, supervises a range of research projects to develop new and better diagnostic tools and find innovative treatments for dementia.

Several promising research studies are underway into potential new treatments for Alzheimer's disease in particular.



**"I developed a passion for research into our ageing population, particularly with the notion that medical research needs to 'catch up' on improving people's quality of life and not just focus on extending the lifespan. The devastating impact of slowly losing a beloved grandparent to Alzheimer's disease fuels my motivation to find a cure."**

Francesca Alves –  
Postdoctoral researcher,  
Translational  
Neurodegeneration Group

## Help reduce the incidence of stroke

Researchers at The Florey are working to reduce the incidence of stroke in our community. This includes discovering or validating biomarkers to provide tools for earlier diagnosis of strokes. And to better understand the molecular basis of brain repair which may lead to improved therapies to support stroke patients' treatment and recovery.



**"Stroke incidence remains a common cause of death and disability in Australia, with one in four people experiencing a stroke in their lifetime. By supporting, educating and developing the next generation of clinical researchers, we can ensure that current knowledge informs the innovation that we will see more of in this space. Ultimately this means we can continue to improve stroke prevention, treatment and recovery to improve the lives of stroke patients in new and exciting ways."**

Professor Vincent Thijs –  
Brain Health & Repair Clinical  
Lead

## Find effective treatments for epilepsy

The Florey is at the forefront of research into the causes and treatment of epilepsy.

Using advanced MRI imaging methods, we continue to make major advances in understanding this disease. This includes mapping the effect of epilepsy on key areas of the brain.

Another team of researchers is focusing on the fundamental physiological changes that predispose people to epilepsy.

This multi-faceted approach to the causes of epilepsy will provide the best chance to find improved treatments for people living with this disease.



**"Epilepsy is a life-long disease, and we need life-long solutions."**

Professor Graeme Jackson,  
Clinical Director and Chief  
Investigator of the Australian  
Epilepsy Project.

# lasting legacy can...

## Help repair damaged brains

Exciting research at The Florey to repair damaged brains using stem cell transplants shows great promise.

By transplanting human stem cells and delivering a growth-promoting protein into the brain, researchers restored motor function in preclinical models of Parkinson's disease.

There is still work to do, but these results provide great hope for people living with movement disorders like Parkinson's disease, motor neurone disease (MND) and multiple sclerosis.



**"By looking at how stem cell therapies could promote brain plasticity, replace cell types and protect or promote events in the brain, we hope to stop or reverse disease progression."**  
Professor Clare Parish, Deputy Director and Head of the Stem Cell and Neural Development Laboratory.

## Provide researchers with world-class equipment and facilities

### Your gift may help fund state-of-the-art equipment like this amazing MRI machine

To conduct ground-breaking research, our world-class researchers need world-class equipment and facilities.

State-of-the-art MRI machines are required to map the most intricate parts of the brain. Sophisticated technology is needed to see the detailed and complex connections within the brain. And this equipment needs to be located in fully equipped laboratories to provide researchers with the tools they need.

Having the best equipment in the best facilities with the best researchers means The Florey can continue to be one of the largest and most highly respected brain research centres in the world.



**A gift in your Will can assist our researchers with state-of-the-art equipment**

# How you can contribute to medical research

## Include a gift in your Will

**Breakthroughs in science are the result of brilliant, sometimes 'out there' ideas and years of painstaking work.**

Sometimes the ideas lead to a new discovery and sometimes they don't. Whatever the outcome, we learn something new each time.

The far-sighted and generous donors who include a gift in their Will to The Florey give our researchers the time they need to pursue their ideas and conduct inspiring and impactful research.

Your gift will support our scientists as they explore new, bold and innovative ideas in world-class facilities.

A gift in your Will may fund state-of-the-art equipment needed to carry out cutting-edge research into the brain. Or perhaps it will help fund an innovative research program and enable a young researcher to stay in Australia to lead research.

Or your gift may contribute to the development of new treatments that will save lives.

A gift in your Will to The Florey is transformational and its impact will continue for generations.



**"Bequests enable the beginning of something new. We researchers have so many ideas, but we can only apply for funding from the government when the ideas are quite mature, with substantial prior data and research investment.**

**We rely on bequests to bring life to these new ideas, which would otherwise go unfunded and unrealised."**

Professor Scott Ayton, Dementia Mission Lead



# “I hope there will be an understanding of the nature of schizophrenia”

Joe's legacy for the future

Joe



Joe Foley meeting with Associate Professor Jess Nithianantharajah, Head of the Synapse Biology and Cognition Group

**Schizophrenia has had a substantial impact on Joe Foley and his family. He knows first-hand how difficult a diagnosis of this poorly understood illness is.**

Joe's wife was diagnosed with schizophrenia early in their marriage when their three daughters were young.

As Joe explains, “Mental illness can be seen to some as an ‘embarrassing’ condition. It is poorly understood, but society abhors those who are directly and indirectly affected. Until the conversation is ‘opened up’. Then you find that many, many people have family members who have these illnesses – but keep quiet because of the stigma.”

Joe has included a gift in his Will to The Florey in the hope that by researching this illness ‘there will be an understanding of the nature of schizophrenia.’

And he goes on to explain, “My daughters have each established themselves in life through education and lifestyle. Additional money would not be significant in changing their lives. However, this gift may support research at The Florey which leads to the enhancement of many lives over many years.”

**A gift in your Will may help uncover the cause of mental health conditions like schizophrenia**

# You can choose how you'd like to support The Florey in your Will

**How you wish to support The Florey in your Will is up to you. There are three ways to choose from:**

---

## **1. An empowering Florey gift**

A gift in your Will ensures The Florey continues to be a world-leading medical brain research institute, attracting and embracing outstanding talent.

Your powerful gift will contribute to the critical thinking of brilliant minds using extraordinary facilities – to challenge, discover, learn, trial and solve the pressing mysteries of the brain.

Your gift will be applied to the most urgent needs of the time and allow discoveries on the cusp to progress to those life-changing 'aha!' moments.

---

## **2. The Florey Future Fund – an endowment fund that lasts forever**

A perpetual gift to The Florey Future Fund is a very special gift. It's a gift that keeps on giving and supporting our researchers forever.

The funds received in The Florey Future Fund are carefully invested, and the interest earned is used to fund exciting and innovative brain research.

A significant gift to The Florey Future Fund ensures we can continue to make ground-breaking discoveries in Australia.

---

## **3. Specific research gift**

When our talented researchers commence their journey, they usually start with a question to answer or a puzzle to be solved. But the wonder of medical research is that you don't always know where it will lead or what answers you'll find.

If you wish your gift to fund a specific area of research, your wishes will be honoured at the time.

You may consider a gift that can be applied at the discretion of The Florey. It may better produce the beneficial results you wish for.

# How to include a gift in your Will

Once your family is taken care of, a gift to The Florey of even just 1% of the value of what you're leaving is a substantial gift. It may include property, shares, superannuation or cash for example.

If you have decided to include a gift in your Will to The Florey, there are several ways you can do this.

## Residual gift

Leave the remainder or a percentage of your estate once family and friends have been provided for. Many supporters choose to make this type of gift because it keeps its value over time.

## A fixed specific gift

This can be real estate, shares or a cash amount. The Florey is a deductible gift recipient (DGR) and can receive certain assets without incurring capital gains tax. Less tax is then paid by the estate meaning more value for your gifts.

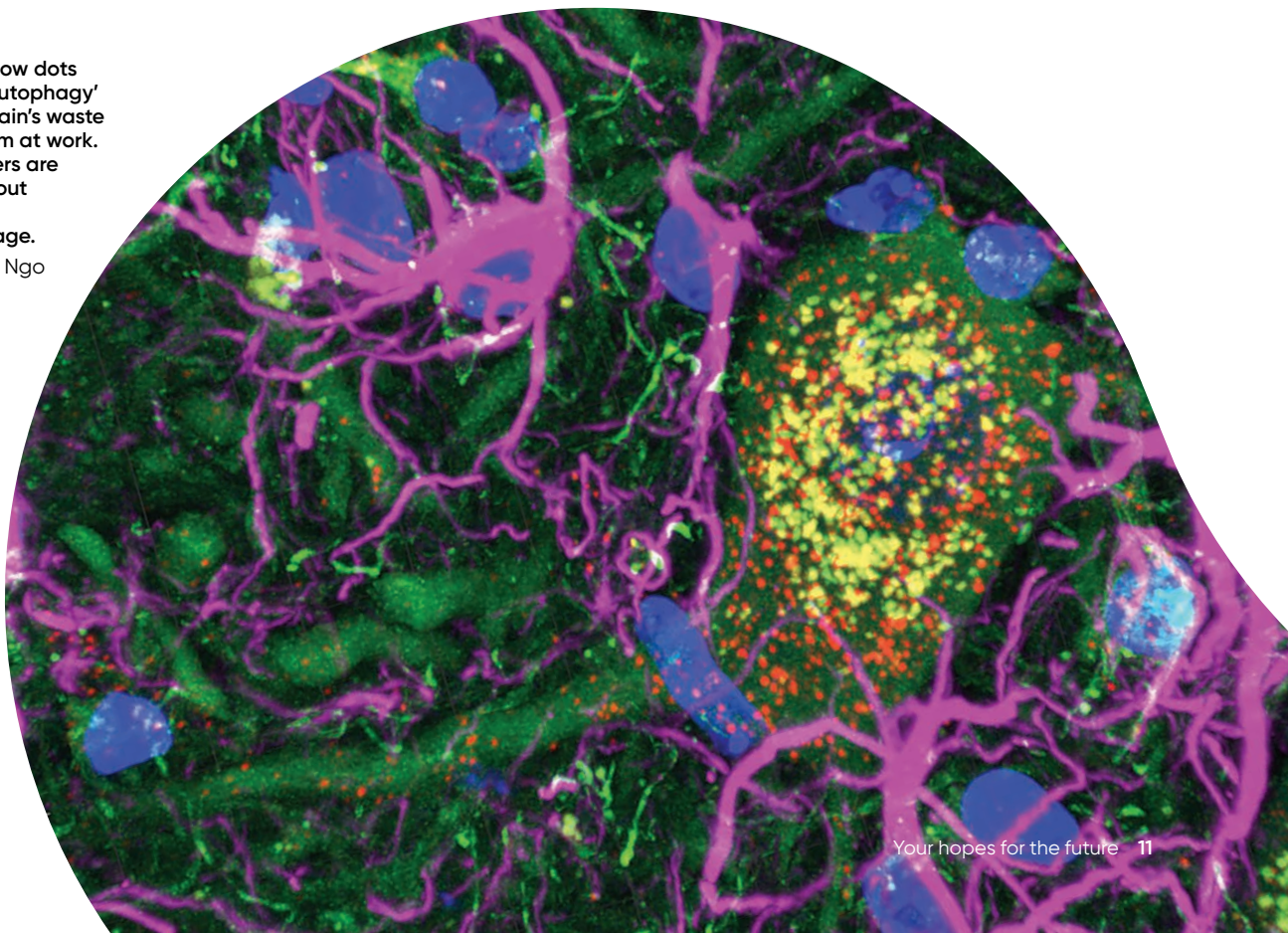
## Whole or proportion of your estate

You can leave your entire estate or any part of it to The Florey.

Superannuation is not automatically included in your estate. If you wish to include all or part of your superannuation in your gift to The Florey, we suggest you seek legal advice.

The red and yellow dots represent the 'autophagy' pathway, the brain's waste clearance system at work. Florey researchers are working to find out why this system declines as we age.

Image by Jenny Ngo



# Suggested wording for including a gift to The Florey in your Will

**If you choose to include a gift to The Florey in your Will, please be assured we are deeply grateful for your generosity.**

**And we are conscious of the trust you have placed in us to continue seeking answers and making advances in brain science.**

We suggest you speak with a legal professional when preparing your Will or adding a codicil to ensure your wishes will be carried out as you have planned.

## **The following suggested wording may be used as a guide**

"I give to The Florey Institute of Neuroscience and Mental Health (ABN 92 124 762 027) (The Florey)

1. \_\_\_\_\_ % of my estate OR
2. the residue of my estate OR
3. \_\_\_\_\_ % of the residue of my estate OR
4. the sum of \$ \_\_\_\_\_ OR
5. \_\_\_\_\_  
*(insert specific property or shares)*

to be applied for the purpose of medical research in such manner as its directors may determine.

I declare that the receipt of The Florey's authorised officer will be a sufficient discharge to my executors who will not be bound to see the application of this gift."

## **A gift to a specific research area – add this clause**

It is my wish that, without creating any binding trust or other obligation on The Florey or its directors, the gift will as far as possible be applied for the purpose of the study of

---

*(insert research area)*

## **Florey Future Fund**

For a bequest to The Florey's perpetual endowment – Florey Future Fund, please get in touch to ensure the wording you use will support your intent.

## **Changing your Will**

If you already have a Will, you can add an extra page nominating a gift to The Florey. This is called a codicil.

## **A gift to honour a loved one**

You may like to honour a loved one by naming the gift in your Will in memory of someone you have loved or cared about.



Florey Society members enjoy getting together at functions

## We'd like to thank you

**If you let us know you have included a gift in your Will to The Florey, we'd love to welcome you to The Florey Society.**

You will be joining a group of like-minded people who value the role of medical research in improving lives. These far-sighted individuals are empowering medical researchers for generations beyond their lifetime.

As a member of The Florey Society, you will receive regular updates on the latest research findings, such as new studies, prevention, cures, and scientific breakthroughs.

And on occasion you'll receive invitations to meet our medical researchers, who will tell you about their latest research.

You will see first-hand the amazing world-class equipment and facilities that our wonderful donors like you have made possible.

If you make the choice to tell us you have included a gift in your Will to The Florey it will be treated with absolute confidentiality.

It would be wonderful to thank you personally and have the opportunity to show you our deep appreciation for your generous and important gift.

# Your Will reflecting your hopes for the future

**Thank you for considering a gift in your Will for The Florey.**

**Your Will is a deeply personal document that reflects who you are and what matters to you.**

A Will is not a static document. You may wish to review your Will and update it if you've experienced a significant life event such as a birth, death, marriage or illness.

We'd love to talk with you about your hopes for the future and how they can be fulfilled through leaving a gift to The Florey in your Will.

And we would like to stay in touch with you to update you on how your gift will contribute to our research success!

**Please get in touch with any queries you may have about your gift to ensure your wishes are met when the time comes.**

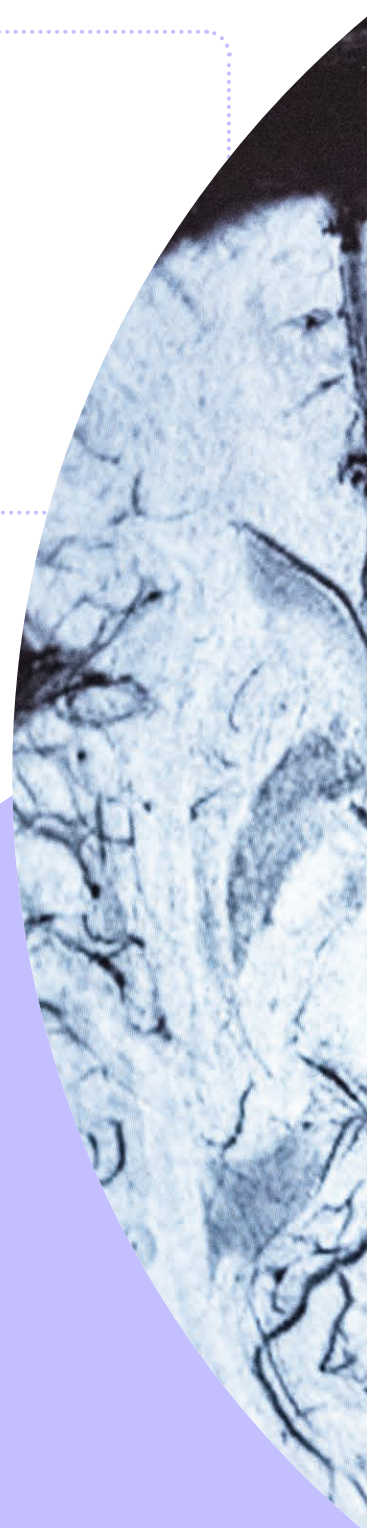
## Contact

### Bequests Manager

The Florey  
Reply Paid 83037  
30 Royal Parade  
Parkville 3052

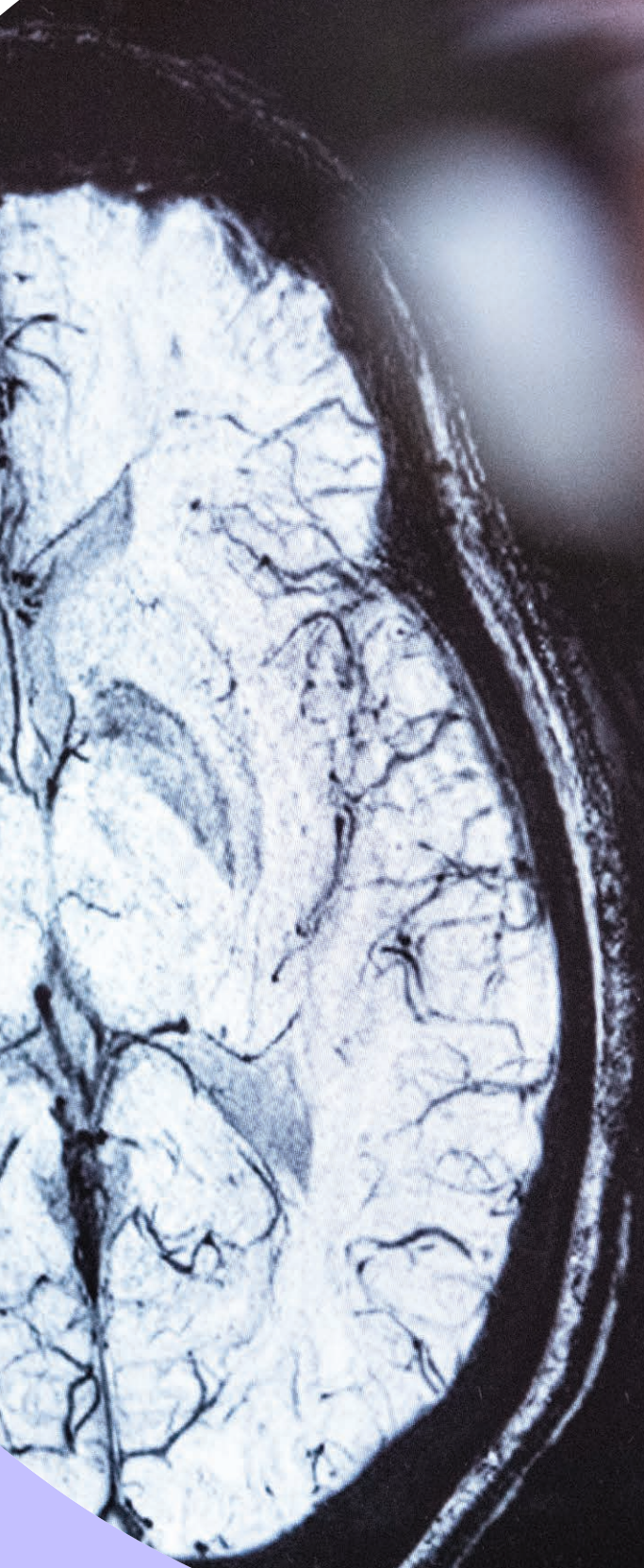
[philanthropy@florey.edu.au](mailto:philanthropy@florey.edu.au)

1800 063 693



Options Help

MELBOURNE BRAIN C  
P  
M

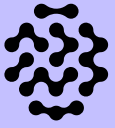


10cm

TP 0  
SP H26.2  
SL 16.0  
FoV 182\*224  
364\*448s  
Tra  
588

Tool


Patient	Eval	Exam



**The Florey**  
Advancing Brain Research



The Florey

@TheFlorey



**The Florey Institute of Neuroscience  
and Mental Health**